

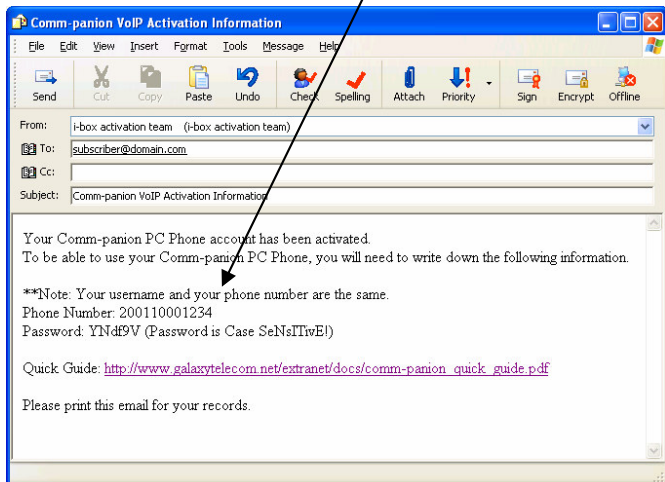
'Comm-panion' PC Phone

Quick Installation Guide

Follow these quick steps to configure your Comm-panion PC Phone

1 Activation E-mail

- Locate your activation email



2 Install

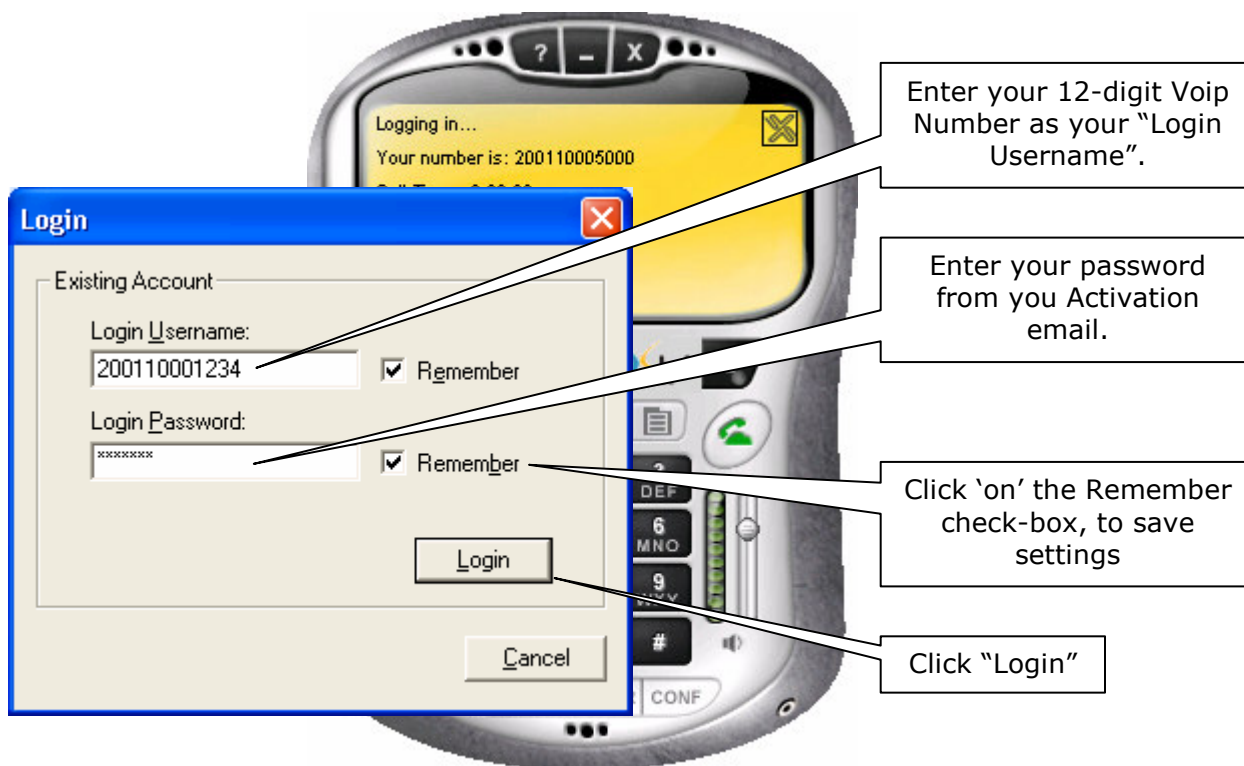
- Make sure to exit any software applications that use sound, such as CD and media players.
- Run the comm-panion_install.exe program. (Available from your service provider.)
- Follow the instructions for each step, progressing through the InstallShield Wizard until the installation is complete.

3 REGISTER: Configure it to make Calls

d). Comm-panion displays a Checkbox "**Launch X-PRO Galaxy Telecom?**" It is recommended you check this box, then click **FINISH**, in order to immediately configure **the PC Phone**

e). The '**Audio Configuration Wizard**' runs automatically on the initial startup.. Follow the instructions to **setup your 'audio' levels, then....** If you need to run the "Audio Tuning Wizard" again.. 'right-click' anywhere over the applications and select 'Audio Tuning Wizard'

NOTE: Make sure that you select the correct connection type at the end of the audio tuning wizard, as this greatly improves quality over lower-speed internet connections.



4

Make a Call

The **Comm-panion** provides a handy dial pad to quickly dial telephone numbers. Most calls be dialed directly from the dial pad or by entering the numbers from your 'keyboard'. As the first few digits of the number are typed, when the faded number appears, press the TAB key and **Comm-panion** auto-completes the faded numbers.



If you need further assistance, contact your Service Provider